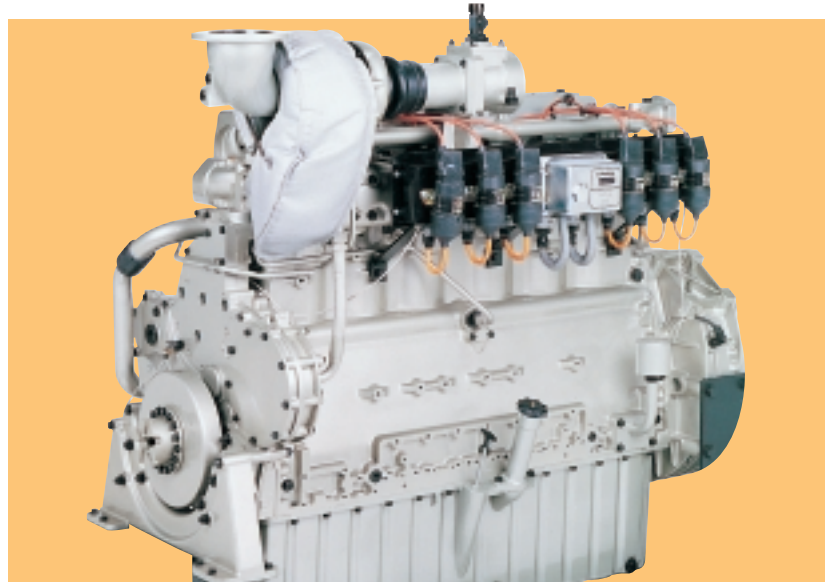


# 2000 Series

Spark Ignited Gas Engine

Designed in advance of today's uncompromising demands within the gas power generation industry, the Perkins 2000 Series 6 cylinder spark ignition gas engine offers superior performance, dependability and reliability.

The 2006TSI is a turbocharged 6 cylinder in-line engine designed for operation on natural gas. The internationally proven durability and reliability, combined with exceptional thermal efficiency and reduced whole life costs, make selection of the Perkins 2000 Series engine as prime mover the obvious choice. The 2000 Series spark ignited gas engine can be supplied to suit customer requirements as an Electro Unit for power generation or Cogen Unit specification for combined heat and power (cogeneration) operation.



# 2006TSI

165 kWm at 1500 rpm  
185 kWm at 1800 rpm

## Economic power

- The modern design of the 2000 Series incorporates the latest development and engineering techniques, resulting in excellent durability, economical whole life costs and reliability.

## Efficient power

- Designed for maximum thermal efficiency, the 2006TSI offers compact, high power to weight ratio, an economical solution to power and heat requirements.
- High commonality of components with other engines in the 2000 Series family offers reduced stocking and inventory levels.

## Reliable power

- The high level of product serviceability and ease of maintenance maintain optimum availability.
- Total after-sales service, backed by Perkins' world-wide distributor/dealer network.

Engine Speed rev/min	Type of Operation	Gross Engine Power	
		kWe – Natural Gas*	kWm – Natural Gas*
1500	Continuous Operation Power	157	165
1800	Continuous Operation Power	176	185

\*A catalyst will be required to comply with TA Luft emission regulations

The above ratings represent the engine performance capabilities in accordance with ISO 3046 at reference conditions equivalent to those specified in ISO 3046/1. Electrical ratings are based on average alternator efficiency at a unity power factor based on natural gas having a lower calorific value of 34.71 MJ/m<sup>3</sup>.

Please consult your local Perkins distributor/dealer or Perkins Engines Company Limited for derating calculations for ambient conditions or use of gaseous fuels other than British natural gas.

**Continuous Operation Power** – A 'true' Baseload rating as defined in ISO 8528 as COP.

## Standard Gas Engine Specification

### Core engine

- Cast high-grade iron cylinder block
- Wet liners in centrifugally cast iron, plateau honed for quick ring bedding and excellent oil control
- Forged steel crankshaft – nitride hardened
- Forged camshaft
- High grade cast iron cylinder heads with two valves per cylinder
- Crankshaft driven gear train for camshaft
- Oil-cooled aluminium alloy piston with three-ring pack
- Forged steel split cap connecting rods with 2 bolt fixing

### Gas/Ignition system

- Air/fuel mixer with mixture adjustment screw. Zero pressure regulator supplied loose
- Fairbanks Morse IQ 250 ignition system and wiring harness
- Individual cylinder ignition coils

### Lubrication system

- Gear driven lubricating oil pump
- Spin on type replaceable lubricating oil filters
- Shell and tube type oil cooler, jacket water-cooled
- Crankcase vented to atmosphere, *closed circuit on Cogen Units*

### Cooling system

- Thermostatically-controlled system
- Belt-driven circulating pump †

### Air intake system

- Medium duty paper element air filter with restriction indicator

### Exhaust system

- Cast iron exhaust manifold
- Vertical exhaust outlet

### Governing system

- Electronic governing system, conforming to ISO 8528 Part 5 Class G2

### Electrical system

- 24 Volt electric starter motor
- 24 Volt battery-charging alternator †

### Drive system

- Cast iron flywheel housing SAE 1 and flywheel SAE J620 Size 14.
- Viscous type torsional vibration damper

### Engine protection system

- 24 Volt high coolant temperature and low oil pressure switches

### Engine mountings

- Front mounting feet

### Painting

- Commercial primer finish

### Packing/Preservation

- All engines are preserved after test running, shrink wrapped and suitable for containerised shipment

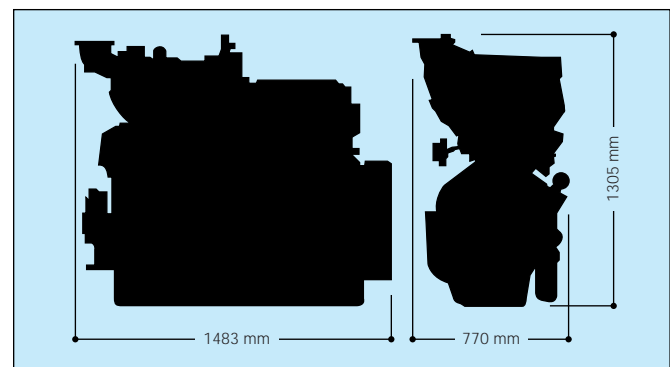
† Not supplied on Cogen Unit

## Technical Data

<b>Number of cylinders</b>	6
<b>Cylinder arrangement</b>	In line
<b>Cycle</b>	4-stroke
<b>Induction system</b>	Turbocharged
<b>Combustion system</b>	Spark ignition
<b>Cooling system</b>	Water cooled
<b>Displacement</b>	12.17 litres
<b>Bore and stroke</b>	130 mm x 152 mm
<b>Compression ratio</b>	10.0:1 (Natural Gas)
<b>Direction of rotation</b>	Anti-clockwise, viewed on flywheel
<b>Total lubrication oil capacity</b>	86.5 litres
<b>Coolant capacity</b>	28 litres
<b>Engine dimensions:</b>	
<b>Total weight (dry)</b>	1120 kg
<b>Length</b>	1483 mm
<b>Width</b>	770 mm
<b>Height</b>	1305 mm

Fuel consumption kJ/kWs		
	1500 rev/min	1800 rev/min
<b>Natural Gas</b>		
100% of COP rating	2.68	2.83
75% of COP rating	2.76	3.02

COP: Continuous Operation Power



**Perkins Engines Company Limited**

Tixall Road Stafford ST16 3UB United Kingdom  
 Telephone 01785 223141  
 Fax 01785 215110  
 www.perkins-engines.com

All information given in this leaflet is correct at the time of printing but may be changed subsequently by the company.

Distributed by