

2000 Series

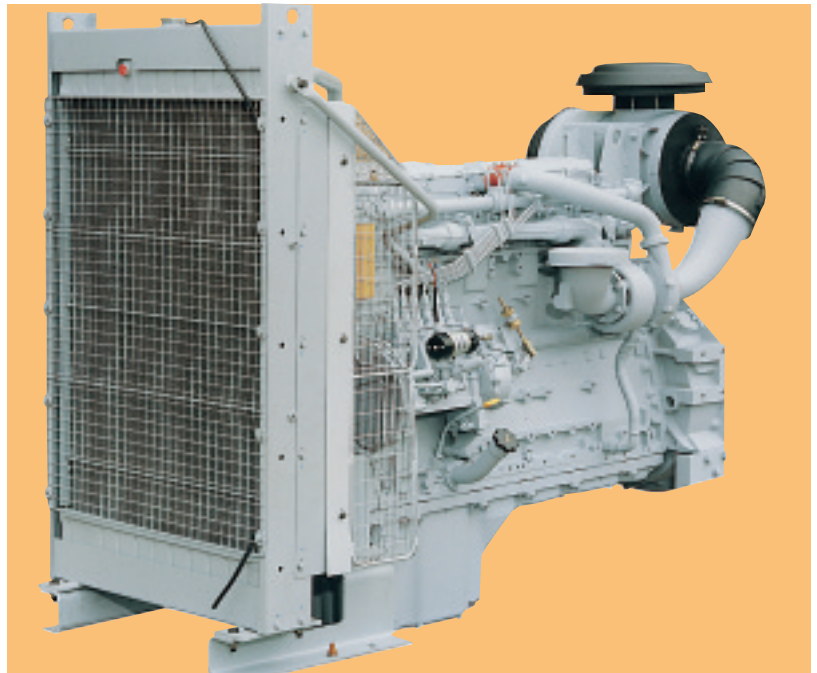
2006-12TW

Diesel Engine –
Industrial Open Power Unit

248kWm / 332bhp

The Perkins 2000 Series of variable-speed industrial engines is a family of 6-cylinder units with a deserved reputation for providing reliable power and outstanding economy in a wide variety of stationary off-highway applications.

The Perkins 2006-12TW offers excellent power and torque from a lightweight compact power unit in a full specification package.



Note: Radiator package is supplied loose

Durable power

- **Silicon Carbide impregnated cylinder liners** give accurate bedding in of piston rings, low oil usage and low wear rates for long engine life.

Clean, efficient power

- **Helical inlet ports, high fuel injection pressures and high compression ratio** combine to deliver a highly efficient combustion process. This extracts greater fuel economy contributing to lower running costs across the power band.
- **Design engineered** to generate more usable power and torque with reduced exhaust emissions.

Reliable power

- **Perkins outstanding reputation comes from our world class manufacturing capability.** Internationally recognised and customer approved quality procedures ensure unsurpassed reliability.
- **2000 Series engines' high compression ratios** give the significant benefit of quick and clean starting down to temperatures as low as -15°C .

Designed to fit

- **Perkins industrial open power units** offer a complete package with matched cooling system for easy installation and ready to run.

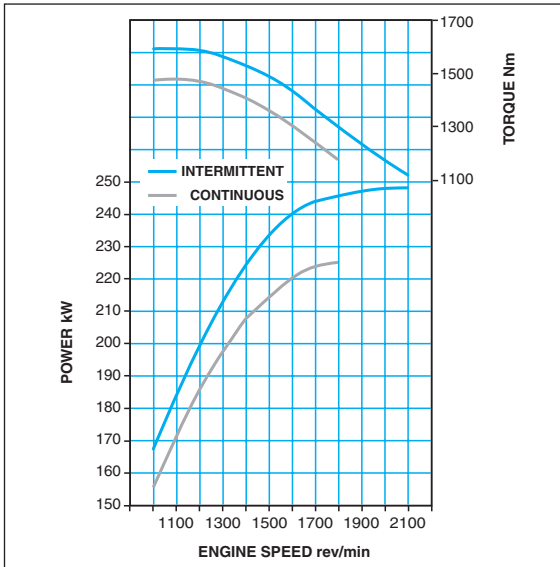
Worldwide support

- **Perkins' network of 4000 distributors and dealers** assures the operator of the highest standards of in-service technical and parts support.

Performance Data	Net intermittent	Speed rev/min	Net continuous	Speed rev/min
Power Output (kW)	248	2100	225	1800
Power Output (bhp)	332	2100	302	1800
Peak Torque (Nm)	1595	1100	1485	1100
Peak Torque (lbf ft)	1176	1100	1095	1100

Performance data quoted in accordance with ISO3046/BS5514/DIN6271 conditions

2000 Series



Performance and tolerances to ISO3046/BS5514/DIN6271

Standard specification

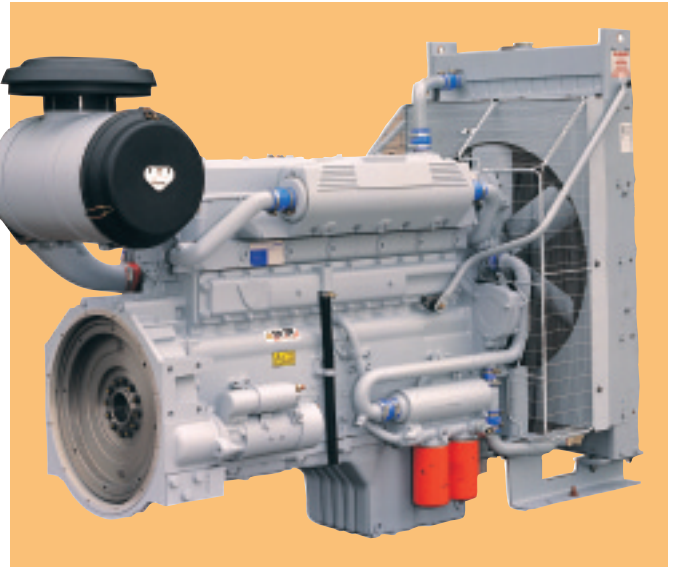
- Mounted air filter
- 24Volt 40 Amp alternator
- 24 Volt starter
- 755 mm pusher fan
- Radiator and fan guard supplied loose
- Flywheel to SAE J620 size 14
- Flywheel housing SAE 1
- Fuel injection pump and full-flow fuel filter
- All-speed mechanical governor
- Speed control lever
- Senders/switches for coolant temperature and oil pressure
- 24 Volt shutdown solenoid
- Oil cooler with full-flow filters
- Wet sump
- Turbocharger with exhaust elbow
- Inlet manifold incorporating charge cooler
- Front engine mounting foot
- User's handbook and parts manual

Optional equipment

- Timing case PTO
- Air filter pre-cleaner
- Immersion heater 110V or 220/240V 750 Watt
- Rear mounting feet
- Mounted radiator
- Tool kit
- Workshop manual

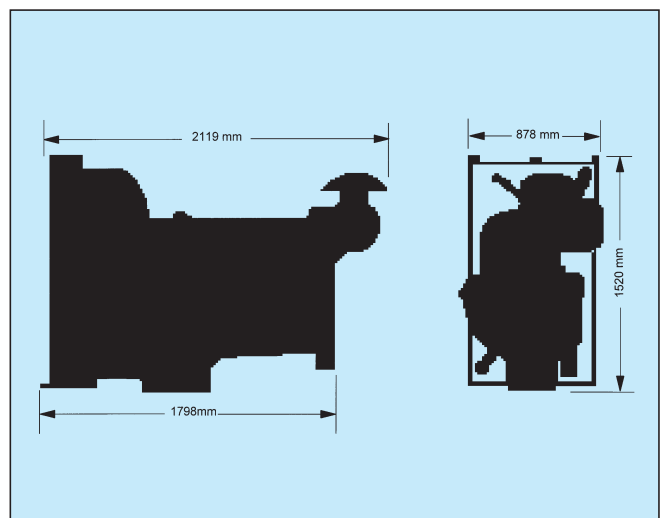
This list is not exhaustive – please consult your Perkins dealer

2006-12TW



General data

Bore and stroke	130.175 x 152.4mm
No of cylinders	6 in-line vertical
Cubic capacity	12.17 litres
Cycle	4 stroke
Aspiration	Turbocharged and water to air charge cooled
Combustion system	Direct injection
Compression ratio	15.9:1
Firing order	1.4.2.6.3.5.
Rotation	Anticlockwise viewed on flywheel
Governing	Mechanical all-speed
Cooling	Thermostatically-controlled pressurised liquid cooled
Coolant capacity	47.2 litres
Lubricating oil capacity	40.8 litres
Weight (dry)	1216 kg (including starter and alternator)



Perkins Engines Company Limited

Lancaster Road, Shrewsbury, SY1 3NX England
 Telephone +44(0)1743 212000
 Fax +44(0)1743 212700
www.perkins.com

All information in this leaflet is substantially correct at the time of printing but may be changed subsequently by the Company.